

STORMWATER INSPECTIONS



AT RETAIL FOOD ESTABLISHMENTS

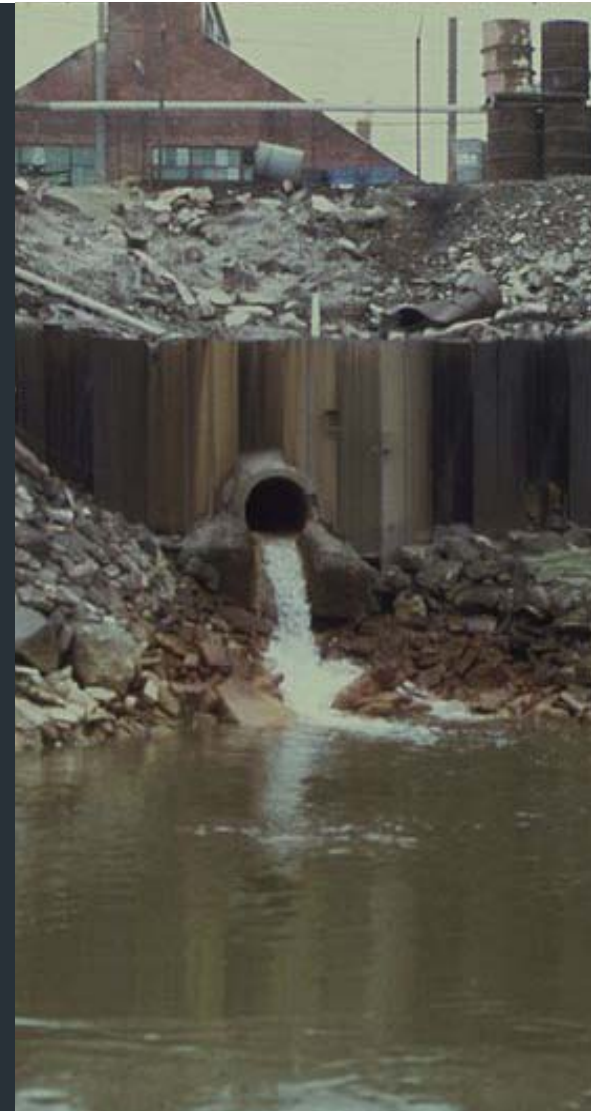
SACRAMENTO COUNTY

CUYAHOGA RIVER FIRE



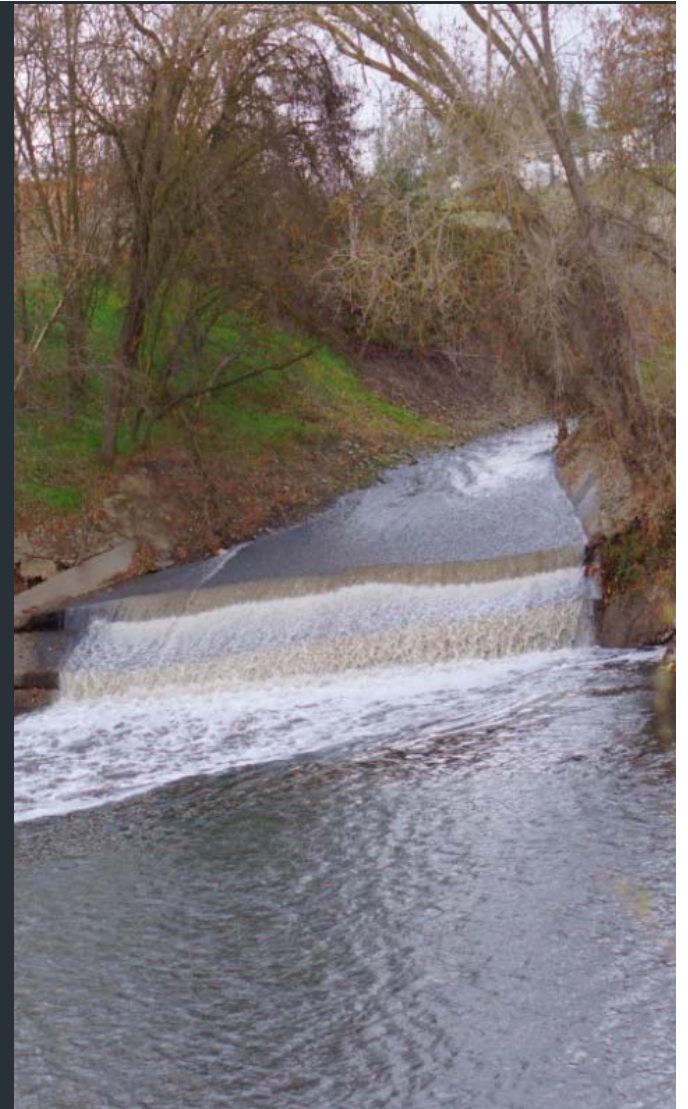
FEDERAL CLEAN WATER ACT

- ❑ 1972 AMENDMENT
 - ❑ PERMITTING SYSTEM
 - ❑ WATER QUALITY PARAMETERS
- ❑ REGULATED POINT SOURCE DISCHARGES
 - ❑ INDUSTRIAL
 - ❑ MUNICIPAL (SEWAGE TREATMENT)



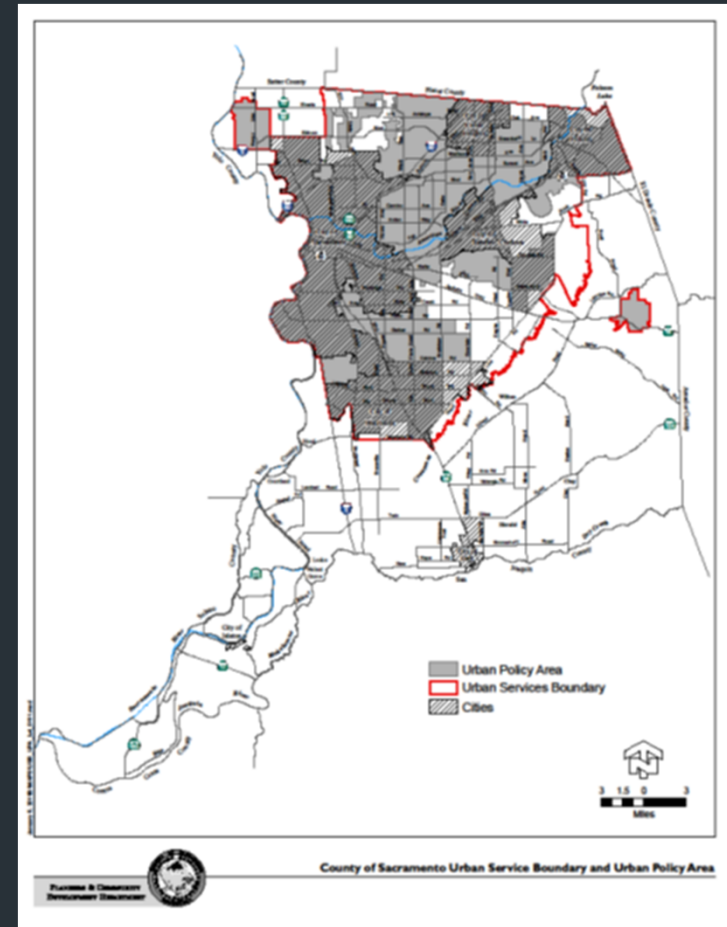
FEDERAL CLEAN WATER ACT

- 1986 AMENDMENT
- REGULATED NON-POINT SOURCE DISCHARGES
 - ▣ STORMWATER
- LOCAL JURISDICTIONS RESPONSIBLE FOR URBAN RUNOFF



MUNICIPAL SEPARATE STORMWATER SEWER SYSTEM PERMIT (MS4)

- ❑ PERMITTEES
- ❑ URBAN SERVICE BOUNDARY
- ❑ ELEMENTS OF:
 - ❑ MUNICIPAL OPERATIONS
 - ❑ ILLICIT DISCHARGES
 - ❑ PLANNING / NEW DEVELOPMENT
 - ❑ COMMERCIAL / INDUSTRIAL PROGRAM
 - ❑ PUBLIC EDUCATION / OUTREACH
 - ❑ WATERSHED STEWARDSHIP
 - ❑ ANNUAL REPORTING



COMMERCIAL / INDUSTRIAL PROGRAM

NINE BUSINESS TYPES

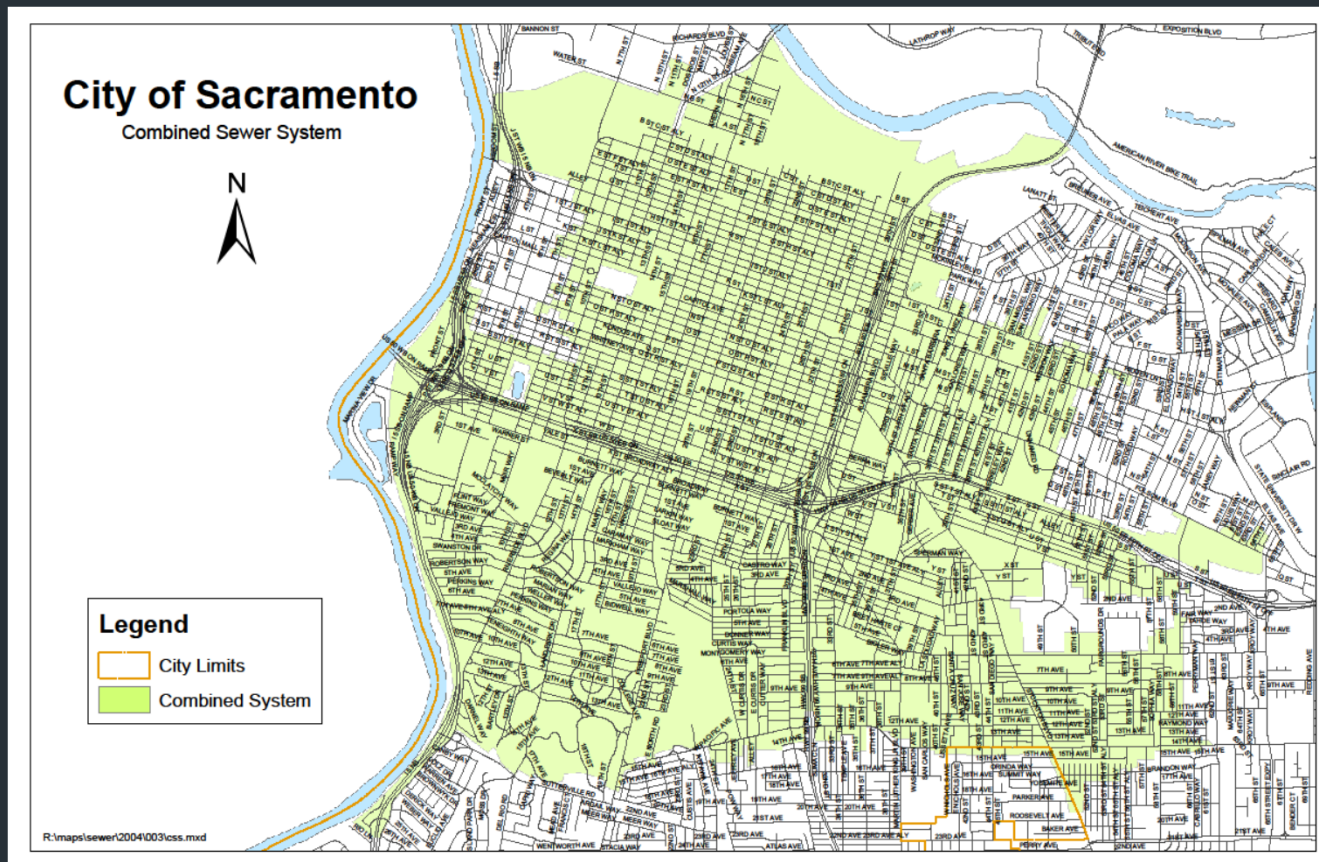
- ❑ AUTO BODY
- ❑ AUTO REPAIR
- ❑ AUTO DEALER
- ❑ EQUIPMENT RENTAL
- ❑ INDUSTRIAL
- ❑ KENNELS
- ❑ NURSERIES
- ❑ RESTAURANTS
- ❑ GAS STATIONS



EMD RESPONSIBILITIES

- ❑ INSPECTIONS (ONCE EVERY 3 YEARS)
- ❑ COMPLAINT RESPONSE
- ❑ EDUCATIONAL OUTREACH AND COMPLIANCE ASSISTANCE
- ❑ DATA TRACKING AND REPORTING TO STATE REGIONAL WATER BOARD AND PERMITTEES
- ❑ ENFORCEMENT

COMBINED SYSTEM



GENERAL REQUIREMENTS

- ❑ ILLICIT CONNECTIONS TO STORMWATER DRAINAGE SYSTEM
- ❑ PROHIBITED STORMWATER DISCHARGES
- ❑ POTENTIAL PROHIBITED STORMWATER DISCHARGES
- ❑ IMPLEMENTATION OF BEST MANAGEMENT PRACTICES

GENERAL REQUIREMENTS

ILLEGAL CONNECTIONS



GENERAL REQUIREMENTS

PROHIBITED DISCHARGES



GENERAL REQUIREMENTS

PROHIBITED DISCHARGES



GENERAL REQUIREMENTS

POTENTIAL PROHIBITED DISCHARGES



GENERAL REQUIREMENTS

POTENTIAL PROHIBITED DISCHARGES



GENERAL REQUIREMENTS

POTENTIAL PROHIBITED DISCHARGES



GENERAL REQUIREMENTS

BEST MANAGEMENT PRACTICES



GENERAL REQUIREMENTS

BEST MANAGEMENT PRACTICES



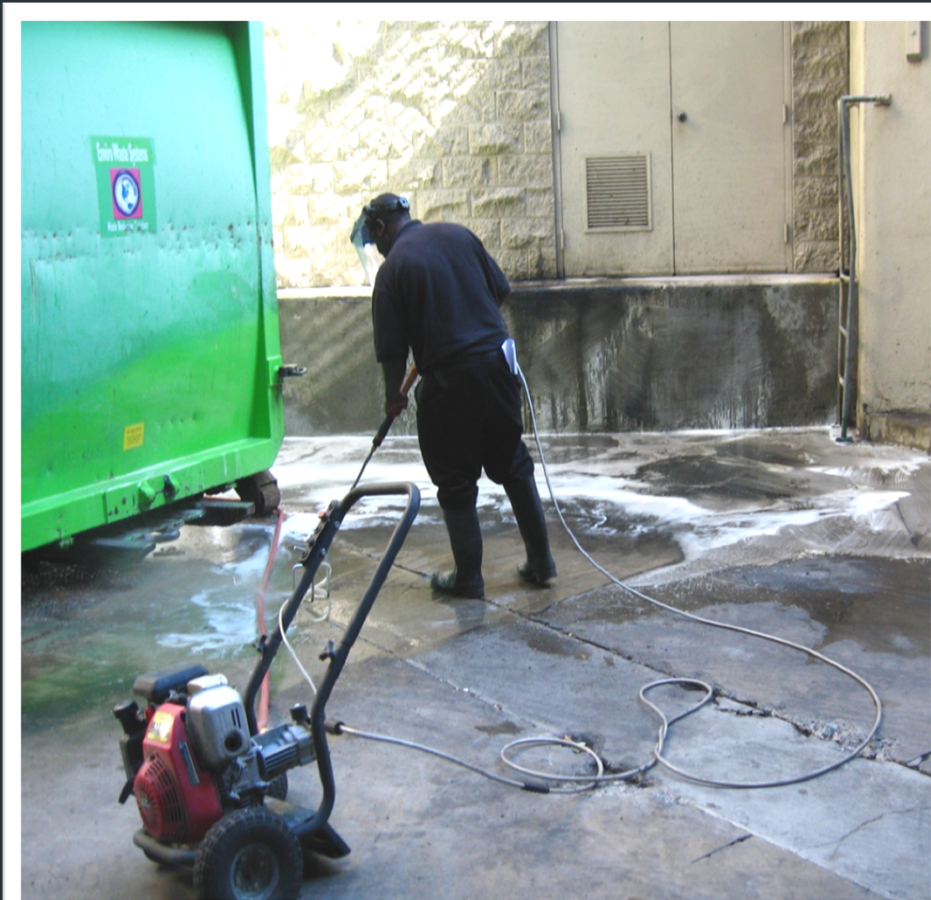
GENERAL REQUIREMENTS

BEST MANAGEMENT PRACTICES



GENERAL REQUIREMENTS

BEST MANAGEMENT PRACTICES



GENERAL REQUIREMENTS

BEST MANAGEMENT PRACTICES



RESOURCES

- ❑ BUSINESS ENVIRONMENTAL RESOURCE CENTER (BERC)
- ❑ SACRAMENTO STORMWATER QUALITY PARTNERSHIP
- ❑ ENVIRONMENTAL MANAGEMENT DEPARTMENT

QUESTIONS



STORMWATER INSPECTIONS AT RETAIL FOOD
ESTABLISHMENTS

MUNICIPAL ELEMENT (CWA)

MUNICIPAL SEPARATE STORMWATER SEWER PERMIT (2004)

