



## Sacramento County Environmental Management Department

# Mangan Park Community Update

## Cleanup Oversight

The Sacramento County Environmental Management Department (EMD) has been given delegation authority from the California Department of Toxic Substances Control (DTSC) to oversee lead clean-up efforts as a result of a release of lead from the City of Sacramento Mangan Park Rifle and Pistol Range located at 2140 34th Avenue.

Prior to the construction of the Mangan Park Rifle and Pistol Range in the early 1960s, the site and vicinity were historically used for agriculture, and was a part of what is now Sacramento Executive Airport (SEA).

To oversee the cleanup, EMD leadership, its Environmental Specialists with the support of DTSC and the Air Quality Management District, will guide the City of Sacramento by applying scientific methods to identify and correct environmental issues in order to protect public health and the environment.

## Upcoming Corrective Action Submissions

Initial testing of 29 yards immediately north of the gun range identified 11 with lead concentrations in soil above the state residential screening level. Two other yards were identified as potentially having lead above the residential screening level. The yards that were tested were in the area of the neighborhood most likely to be impacted from the gun range, but the testing did not confirm the source of the lead, which can come from other sources such as lead paint used on houses. On December 22, 2016, the City submitted the *Mangan Neighborhood Remedial Investigation Work Plan* for EMD review. The purpose of this investigation is to locate the specific areas within the 13 yards that may need to be cleaned up.

### IN THIS ISSUE

- Cleanup Oversight Corrective Action Submissions
- Cleanup Progress Update & Next Steps

*Por favor, vaya más abajo en la página de información en español.*

### SIGN UP TO RECEIVE THE NEWSLETTER ELECTRONICALLY

EMAIL:  
[ManganPark@SacCounty.net](mailto:ManganPark@SacCounty.net)  
\*\*\*Use "Newsletter" in the Subject Line

### WEBPAGE CREATED FOR THE MANGAN PARK CLEANUP PROJECT

Get access to background information, work plans, compliance orders, and monthly newsletters, regarding the Mangan Park Lead Cleanup Project by going to [www.EMD.SacCounty.net](http://www.EMD.SacCounty.net) – access the link on the EMD Latest News and Information section of the home page.

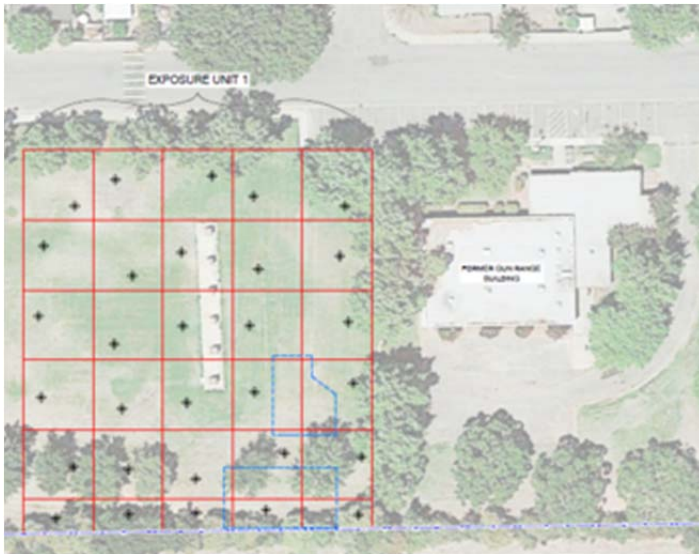
### REDUCE YOUR FAMILY'S EXPOSURE TO LEAD

- Keep children away from areas of bare soil;
- Always wash children's hands,

The City will be submitting a report to EMD with the results for the 13 yards and a *Remedial Action Plan* in early March. Cleanup actions are expected in the Spring 2017.

## Cleanup Progress Update & Next Steps

In November 2016, approximately 230 tons of soil were removed from specific areas of the Mangan Park Archery Range. To verify that the soil removal was sufficient to protect human health, EMD directed the City to resample all of Exposure Unit 1 (i.e., the Archery Range). The City will have the additional sampling in the Archery Range conducted beginning January 2017. If the results confirm the area has been cleaned up, the Archery Range may be reopened for public use in early spring.



In 2017, EMD will continue to oversee the cleanup at the Mangan Park Rifle and Pistol Range and in the neighborhood by guiding the City of Sacramento in applying scientific methods to identify and correct environmental issues in order to protect public health and the environment.

COUNTY OF SACRAMENTO  
BOARD OF SUPERVISORS  
District 1, Supervisor Phil Serna  
District 2, Supervisor Patrick Kennedy  
District 3, Supervisor Susan Peters  
District 4, Supervisor Roberta MacGlashan  
District 5, Supervisor Don Nottoli

Questions/comments about this newsletter?  
Email [ManganPark@SacCounty.net](mailto:ManganPark@SacCounty.net)

- especially when they enter the home;
- Place doormats inside and outside the doors;
- Thoroughly wash any homegrown vegetables or fruits before eating them;
- Grow vegetables in raised planter boxes.

## CONTACTS

COUNTY OF SACRAMENTO  
Environmental Management  
Department

[www.emd.saccounty.net](http://www.emd.saccounty.net)

Chris Pace

[pacec@saccounty.net](mailto:pacec@saccounty.net)

(916) 875-8457

Childhood Lead Program

Debbie Katz

[katzd@saccounty.net](mailto:katzd@saccounty.net)

(916) 875-8448

Health & Human Services

Department

[www.dhhs.saccounty.net](http://www.dhhs.saccounty.net)

Public Health Office

(916) 875-5881 /

[scph@saccounty.net](mailto:scph@saccounty.net)

CALIFORNIA DEPARTMENT  
OF TOXIC SUBSTANCE  
CONTROL

[www.dtsc.ca.gov](http://www.dtsc.ca.gov)

Russ Edmondson

(916) 323-3372 /

[russ.edmondson@dtsc.ca.gov](mailto:russ.edmondson@dtsc.ca.gov)

CITY OF SACRAMENTO

[www.cityofsacramento.org](http://www.cityofsacramento.org)

Marycon Razo

[mrazo@cityofsacramento.org](mailto:mrazo@cityofsacramento.org)

(916) 808-4751